

MoVeo™ Videoscope

A New Generation of Mobile Videoscope Systems



STORZ
KARL STORZ – ENDOSKOPE
INDUSTRIAL GROUP



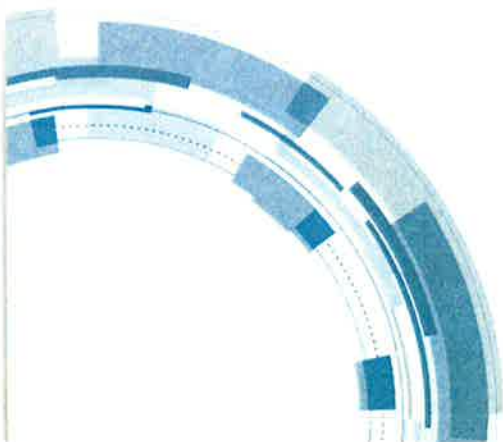
MoVeo™ Videoscope



This portable videoscope system is designed for endoscopic and non-destructive visual inspection of technical assemblies such as turbines, motors, hollow spaces and inspection parts without the need for time-consuming disassembly or causing any damage to the object inspected. This inspection system reduces downtime to a minimum.

Its compact design allows straightforward handling with great flexibility and helps provide meaningful inspection recordings.

MOVEO™ provides excellent imaging and allows documentation of findings by saving photos and videos in a high resolution. The comparative measurement function enables estimations of defects during the visual inspection.





Our Highlights:

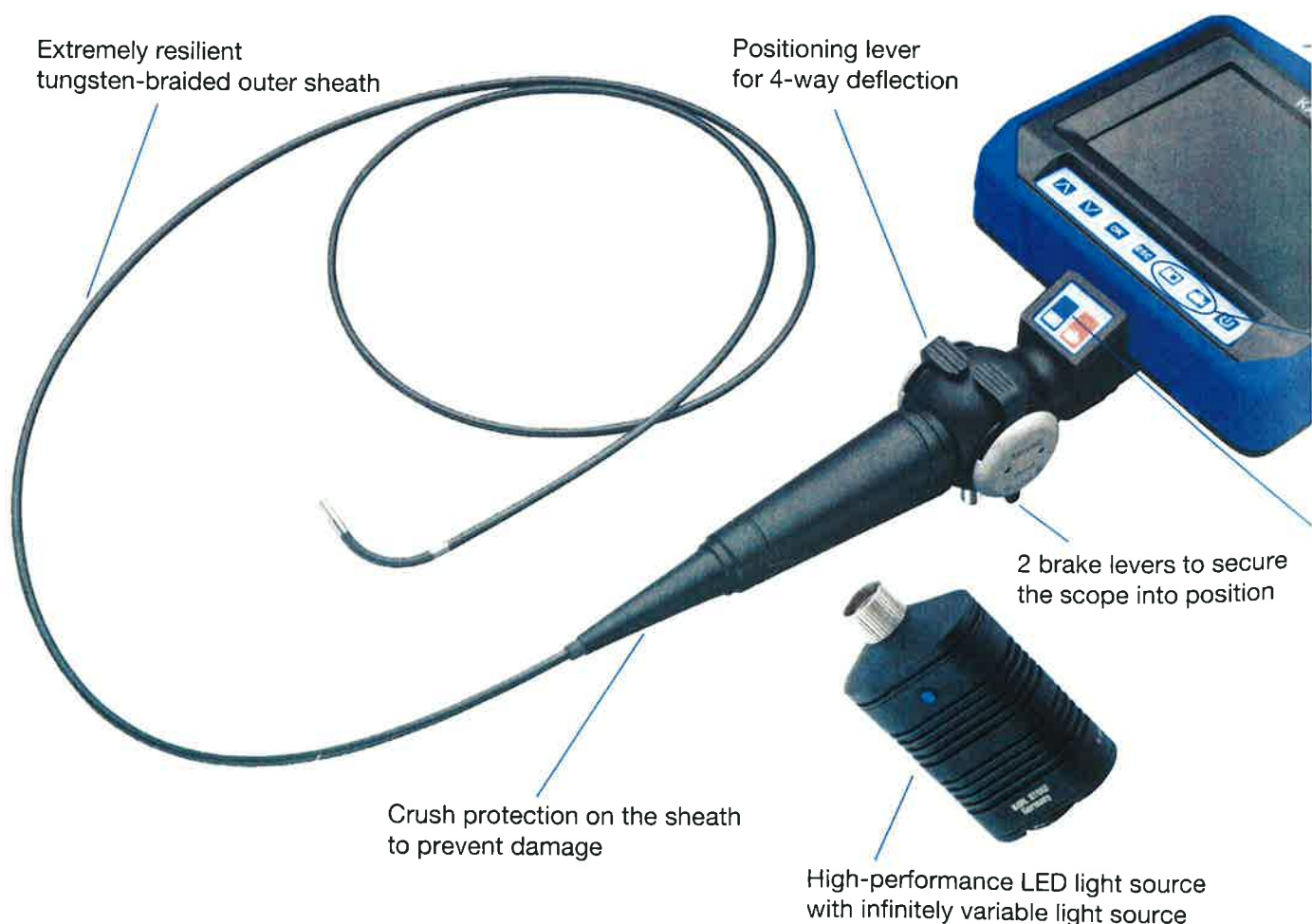
- Integrated 5" TFT LCD monitor
- High-performance LED light source with 25,000 hours service life
- Mains or battery operation with exchangeable lithium-ion batteries
- SD interface
- Ergonomic handle
- Tungsten-braided outer sheath
- 4-way deflection with precise $\pm 150^\circ$ angulation
- Sheath diameter of 4 and 6 mm in working lengths up to 6 m
- Interchangeable lens with integrated safety thread

Your Benefits:

- Excellent imaging coupled with optimal maneuverability and flexibility
- Energy-saving and low maintenance; great reliability and security of investment
- For stationary use or mobile applications up to 3 hours
- Optimal documentation possibilities for photos and videos
- Fatigue-free work and quick-access function keys
- Designed for industrial use
- Reliable and effective visual inspection
- Right equipment for every requirement
- Meets specific demands

MoVeo™ Videoscope in Detail

- Ergonomic handle design for both right- and left-handed users
- Designed for use worldwide
- Extensive connectivity:
 - SD card
 - Mini-USB
 - Video connection to external monitor
- Universal light source connection allows more powerful variants to be used when required





Large, high-resolution 5" true color LCD color monitor with impact protection



Image and video recordings with or without text annotation

Quick access function keys

- High-resolution color video sensor
- Precise and extreme 4-way deflection (4x 150°)
- Interchangeable lens with safety thread and locking mechanism
- Lateral (90°) and 0° near-field interchangeable lens (optional)



- Comparative measurement function
- Simple, intuitive menus including multi-lingual user guidance
- Exchangeable lithium-ion high-performance batteries for mobile applications (up to 3 hours)

Multifunctional System Case

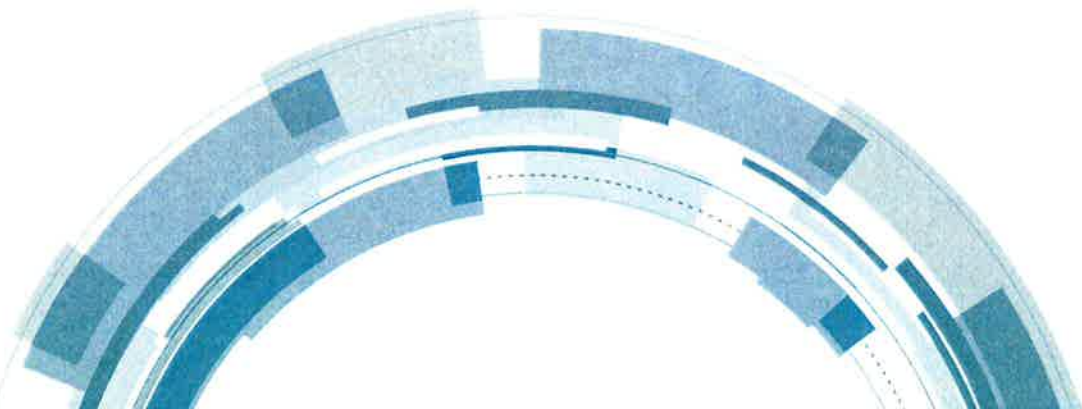


The MOVEO™ multifunction transportation case was designed with the end user in mind.

The system case ensures safe transport and handling during day-to-day industrial routine. In addition to the basic equipment, the multifunctional case offers sufficient storage space for accessories. Accessories are neatly stowed away and are ready to hand at any time. In addition, the case offers enough room for a multifunctional tripod, a rigid protective sheath, interchangeable lenses and a carrying strap. Thanks to the detachable cover, the case can easily be converted into a practical workstation.

The optional multifunctional tripod with a holder for the videoscope improves working ergonomics. The tripod can either be fixed directly inside the case workstation or placed in the direct vicinity of the object to be inspected using the reliable clamp fixture. The MOVEO™ holder is designed in such a way that the videoscope can be easily positioned and handling is fully supported.

The case is extremely sturdy and suitable for transportation as air cargo or check-in flight luggage. It is also possible to secure the contents with a TSA lock (optional).



Accessories for the Multifunctional System Case



80603

VOX00 M

80600 H

80603 B

Multipurpose Stand, for stable mounting of endoscopes and cameras, consisting of:
Articulated stand with a joint in the center and ball joints at both ends, equipped with a mounting plate for holding a camera or endoscope grip, total length approx. 50 cm. The stand can be moved in any direction and can be locked in any position required using a central fixation screw.

MOVEO™ Videoscope Holder,
with tripod socket to screw in Multipurpose Stand 80603

Tension Rod with V Guide, for mounting a videoscope to
Multipurpose Stands 80600 and 80603

Floor Stand, tripod (folding), for installing a stand on a flat
surface, for use with Multipurpose Stand 80603

MoVeo™ Videoscope



81301002-415 **MOVEO™ VIDEOSCOPE 1.5 m x diameter 4 mm, Set,** length 1.5 m, sheath outer diameter 4 mm, direction of view 0°, angle of view 70°, depth of field 15 mm to infinity, tungsten carbide sheath, 4-way deflection 150°, lens with safety thread, ergonomic control unit with 5" LCD display unit and Li-ion battery, SD memory card 2 GB and adjustable LED light source incl. Li-ion battery,

including:

MOVEO™ VIDEOSCOPE 1.5 m x diameter 4 mm

Power Supply, for MOVEO™ VIDEOSCOPE

LED Light Source, adjustable

4x Rechargeable Battery RCR 123 A, 3.0 V,
for LED light source

Charger Unit, Lithium-ion Battery RCR 123 A

Lithium-ion Battery, for MOVEO™ 5" LCD display unit

Charger Unit, for Lithium-ion Battery 81302030

Mini-USB Cable 1.1

Composite Video Cable

Adhesive Label, MOVEO™ labeling 230 x 100 mm

User Manual, for MOVEO™ VIDEOSCOPE

Carrying Case, for MOVEO™ VIDEOSCOPE

81301002-403 **Same, sheath length 3 m**



81301002-615 **MOVEO™ Videoscope Set 1.5 m x diameter 6 mm**, length 1.5 m, sheath outer diameter 6 mm, direction of view 0°, angle of view 70°, depth of field 15 mm to infinity, tungsten carbide sheath, 4-way deflection 150°, lens with safety thread, ergonomic control unit with 5" LCD display unit and Li-ion battery, SD memory card 2 GB and adjustable LED light source incl. Li-ion battery

including:

MOVEO™ Videoscope 1.5 m x diameter 6 mm

Power Supply, for MOVEO™ videoscope

LED Light Source, adjustable

4x Rechargeable Battery RCR 123 A, 3.0 V,
for LED light source

Charger Unit, for rechargeable battery RCR 123 A

Lithium-ion Battery, for MOVEO™ 5" LCD display unit

Charger Unit, for Lithium-ion Battery 81302030

Mini-USB Cable 1.1

Composite Video Cable

Adhesive Label, MOVEO™ labeling 230 x 100 mm

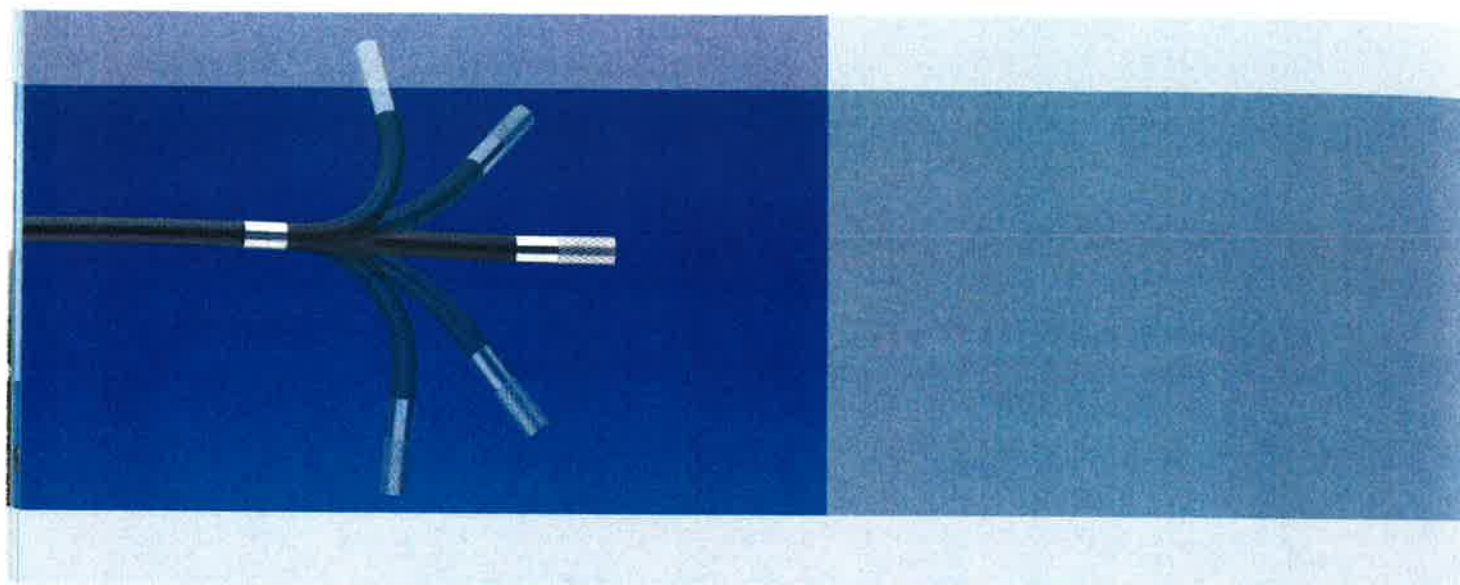
User Manual, for MOVEO™ videoscope

Carrying Case, for MOVEO™ videoscope

81301002-603 **Same**, sheath length 3 m

81301002-606 **Same**, sheath length 6 m,
4-way deflection 95°

Accessories MoVeO™ Videoscope



VG0470WDE **Interchangeable Lens 90°**,
for MOVEO™ Videoscopes VG04015AE and VG04030AE
with outer diameter 4 mm,
Direction of view 90°, field of view 70°,
Depth of field 12 mm to infinity



VG0670WDE **Interchangeable Lens 90°**,
for MOVEO™ Videoscopes VG06015AE, VG06030AE and VG06060AE
with outer diameter 6 mm,
Direction of view 90°, field of view 70°,
Depth of field 12 mm to infinity



VG0470WAE **Interchangeable Lens 0°**,
for MOVEO™ Videoscopes VG04015AE and VG04030AE with outer
diameter 4 mm,
Direction of view 0°, field of view 70°,
Depth of field 4 mm - 22 mm



VG0670WAE **Interchangeable Lens 0°**,
for MOVEO™ Videoscopes VG06015AE, VG06030AE and VG06060AE
with outer diameter 6 mm,
Direction of view 0°, field of view 70°,
Depth of field: 4 mm - 22 mm



495 G **Screw Base**,
for KARL STORZ fiber optic light cable



- | | |
|-------------------------------------------------------------------------------------|----------------------------------------------------------------------------------------------------------------------------------------------------------------------------------------------|
|  | <p>V04003AQ Rigid Sleeve,
for 3.8 mm and 4 mm videoscopes,
working length 300 mm,
outer diameter 5.25 mm</p> |
|  | <p>V06003AQ Rigid Sleeve,
for 6.3 mm and 6 mm videoscopes,
working length 300 mm,
outer diameter 7.5 mm</p> |
|  | <p>80404GM Carrying Strap, for MOVEO™ videoscopes,
length approx. 1.20 m, adjustable,
including:
Carrying Belt
Fixation Screw
Hex Key</p> |
|  | <p>80131 T Carrying Bag,
for MOVEO™ videoscope with accessories</p> |
|  | <p>81301006 Sun Shield, for MOVEO™ videoscope</p> |
|  | <p>81301007 Interface Protector, for MOVEO™ videoscope</p> |
|  | <p>81301008 Special Anti-glare Hood,
for MOVEO™ videoscope</p> |

Specifications

MoVeo™ Videoscope – Color Camera Chip and Interchangeable Lenses

Product Features	VG04015AE	VG04030AE	VG06015AE	VG06030AE	VG06060AE
Color camera sensor technology	CMOS	CMOS	CMOS	CMOS	CMOS
Color system with automatic white balance	PAL/NTSC	PAL/NTSC	PAL/NTSC	PAL/NTSC	PAL/NTSC
Exposure	2 Lux / F 3.4	2 Lux / F 3.4	2 Lux / F 3.4	2 Lux / F 3.4	2 Lux / F 3.4
Direction of view	0°, direct view	0°, direct view	0°, direct view	0°, direct view	0°, direct view
Field of view	70°	70°	70°	70°	70°
Depth of field	15 mm - ∞	15 mm - ∞	15 mm - ∞	15 mm - ∞	15 mm - ∞
Distal tip outer diameter	4 mm	4 mm	6 mm	6 mm	6 mm
Length of rigid tip	14 mm	14 mm	18.3 mm	18.3 mm	18.3 mm
Coding:	yes	yes	yes	yes	yes
90° interchangeable lens					
Art. no.	VG0470WDE	VG0470WDE	VG0670WDE	VG0670WDE	VG0670WDE
Direction of view	90°, lateral view	90°, lateral view	90°, lateral view	90°, lateral view	90°, lateral view
Field of view	70°	70°	70°	70°	70°
Depth of field	12 mm - ∞	12 mm - ∞	12 mm - ∞	12 mm - ∞	12 mm - ∞
Distal tip outer diameter	4 mm	4 mm	6 mm	6 mm	6 mm
Length of rigid tip	18.7 mm	18.7 mm	24 mm	24 mm	24 mm
Coding:	yes	yes	yes	yes	yes
0° near-field interchangeable lens					
Art. no.	VG0470WAE	VG0470WAE	VG0670WAE	VG0670WAE	VG0670WAE
Direction of view	0°, direct view	0°, direct view	0°, direct view	0°, direct view	0°, direct view
Field of view	70°	70°	70°	70°	70°
Depth of field	4 mm – 22 mm	4 mm – 22 mm	4 mm – 22 mm	4 mm – 22 mm	4 mm – 22 mm
Distal tip outer diameter	4 mm	4 mm	6 mm	6 mm	6 mm
Length of rigid tip	16 mm	16 mm	20.3 mm	20.3 mm	20.3 mm
Coding:	yes	yes	yes	yes	yes

MoVeo™ Videoscope Sheath

Product Features	VG04015AE	VG04030AE	VG06015AE	VG06030AE	VG06060AE
Sheath construction	Tungsten carbide (Wolfram) outer coating with 4 layers				
Deflection with a straight sheath	4-way with locking mechanism. left: 150°, right: 150°, up: 150°, down: 150°				4-way with locking mechanism. left: 95°, right: 95°, up: 95°, down: 95°
Sheath length	1.5 m	3 m	1.5 m	3 m	6 m
Minimum bend radius	17 mm	17 mm	21 mm	21 mm	21 mm
Sheath outer diameter	4 mm	4 mm	6 mm	6 mm	6 mm
Operating conditions sheath incl. distal tip	Operating temperature: <ul style="list-style-type: none"> in air: -25° C to 80° C in water: 10° C to 30° C air pressure: <ul style="list-style-type: none"> in air: normal air pressure (1.013 hPa) in water: 1.013 to 1.368 hPa humidity: <ul style="list-style-type: none"> 5-95% relative humidity 				
Fluid resistance of the distal tip	Inserter, no problems in the event of contact with conventional machine oil, light oil or 5% saline solution, SKYDROL in particular excluded. As a general principle, KARL STORZ provides no guarantee without a specific material compatibility test.				
Watertightness of the distal tip	Inserter, watertight construction of the distal tip. With a lens installed, can come into contact with water.				

MoVeo™ Videoscope System Unit

Product Features	VG04015AE	VG04030AE	VG06015AE	VG06030AE	VG06060AE
Monitor	screen size and type: 5" TFT LCD, resolution: 640 x 480, aspect ratio: 4:3, rubber coating for shock absorption				
Operating interface	on/off, menu control, image and video capture, infinitely variable mechanical light intensity control				
Quick access interface	image capture and video capture function				
Function – digital zoom	up to 2x				
Function – image rotation	yes, optional				
Function – mirroring	yes, optional				
Function – time/date	yes, optional				
Function – data export	yes, via USB or SD card				
Function – auto-off option	yes, optional				
Function – external on-screen display	yes, optional				
Function – text annotation	yes, optional				
Function – comparative measurement	yes, optional				
Function – menu language selection	choose from English, German, French, Spanish, Italian, Japanese, Russian, Portuguese, Dutch, Chinese, Polish, Czech, Croatian, Greek, Danish, Swedish, Finnish, Arabic, Korean, Hindi, etc.				
Function – display setting	manual / factory settings				
Function – text color selection	yes, optional				
Function – instant image review	yes, optional				
Light source	detachable LED light source, average service life 25,000 hours, IPX7				
Connection for external light sources	yes, according to the manufacturer's recommendation				
Memory device	SD memory card, 32 mm x 24 mm x 2.1 mm, pins: 9, ≤4Gb, up to 32 Gb where necessary				
Image capture format (resolution)	JPEG (640 X 480)				
Video capture format (resolution)	ASF (640 X 480)				
Playback of captured videos and images	playback supported on Windows Media Player; compatible codex must be installed				
Input/output connections	memory interface: 1x SD, USB interface: 1x mini-USB 1.1./USB, image signal output: 1x AV, mains power supply: 1x 5 V DC				
Power supply – MOVEO™ videoscope	exchangeable lithium-ion polymer battery, rated voltage: 3.7 VDC, capacity: 3900 mAh average operating time: approx. 180 minutes, average charging time: approx. 180 minutes, exchangeable: yes mains adaptor for main unit: input voltage: 100 to 240 V AC, frequency: 50/60 Hz, rated voltage: 5 V DC battery charger for additional battery: input voltage: 100 to 240 V AC, frequency: 50/60 Hz, rated voltage: 4.2 V DC				
Power supply – LED light source	KARL STORZ Art. No.: 81301031; type of battery: 2x RCR 123 A, lithium-ion, rechargeable, rated voltage: 3.0 V, capacity: 900 mAh, operating time with battery operation at 100 % light intensity: 60 minutes (with a new battery), with 50 % light intensity and fully charged batteries operating time is approx. 120 minutes, average charging time: approx. 240 minutes KARL STORZ Art. No.: 81 301036; model: Li-on RCR 123 A Charger, input voltage: 100 to 240 VAC; frequency: 50/60 Hz, rated voltage: 4.5 V DC				
Operating conditions – other parts	operating temperature: ▪ in air: -10° C to 45° C (battery) 0° C to 40° C (mains)		air pressure: ▪ in air: normal air pressure (1.013 hPa)		humidity: ▪ 5-95% relative humidity
Storage and transport conditions	storage temperature: -15° C to +50° C, 5-95% relative humidity, air pressure 500 hPa – 1080 hPa.				
Dimensions	approx. 150 (w) x 290 (h) x 60 (d) mm (without inserter and cable and light source)				
Weight of the entire system including batteries and light source	approx. 930 g	approx. 1000 g	approx. 950 g	approx. 1000 g	approx. 1300 g
Multifunctional case – dimensions and weight	dimensions 617 (w) x 487 (h) x 191 (d) mm weight approx. 7.1 kg (model with all standard components stowed away: 9.3 kg)				
Certified to	CE	CE	CE	CE	CE

Degrees of angulation with ±10% tolerance.

KARL STORZ Industrial Group

**Measurement
Systems and
Documentation***

Videoscopes*

**Portable
Systems***




Product groups

Flexoscopes*

Light Sources*

Borescopes*



At KARL STORZ, we are constantly advancing all of our products. For that reason, please understand that changes may be made to the scope of supply, design, equipment, and technology. Therefore, the information, illustrations, and descriptions contained herein cannot be made the basis for any claims whatsoever.

*For an up-to-date overview of the individual product groups, please refer to the product brochures of the KARL STORZ Industrial Group.



Your Focus – Our Scope

KARL STORZ GmbH & Co. KG
Industrial Group
Mittelstraße 8, 78532 Tuttlingen/Germany
Phone: +49 (0)7461 708-926
Fax: +49 (0)7461 78912
E-Mail: industrialgroup@karlstorz.com
www.karlstorz.com

KARL STORZ Endoscopy (UK) Ltd.
415 Perth Avenue, Slough
Berkshire, SL1 4TQ, United Kingdom
Phone: +44 1753 503500
Fax: +44 1753 578124
E-Mail: info-uk@karlstorz.com

KARL STORZ Endoscopy (South Africa) (Pty) Ltd.
P.O. Box: 6061, Roggebaai 8012
South Africa
Phone: +27 21 417 2600
Fax: +27 21 421 5103
E-Mail: info@karlstorz.co.za

KARL STORZ Endoskope
East Mediterranean and Gulf S.A.L
Block M, 3rd Floor, Beirut Souks, Weygand Street
2012 3301 Beirut, Lebanon
Phone: +961 (1) 999390
Fax: +961 (1) 999391
E-Mail: info@karlstorz-emg.com

STORZ
KARL STORZ – ENDOSKOPE
INDUSTRIAL GROUP